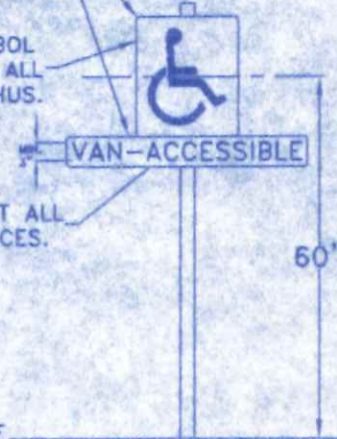


MATTE OR NON-GLARE FINISH WITH LIGHT CHARACTERS ON DARK BACKGROUND OR DARK CHARACTERS ON LIGHT BACKGROUND.

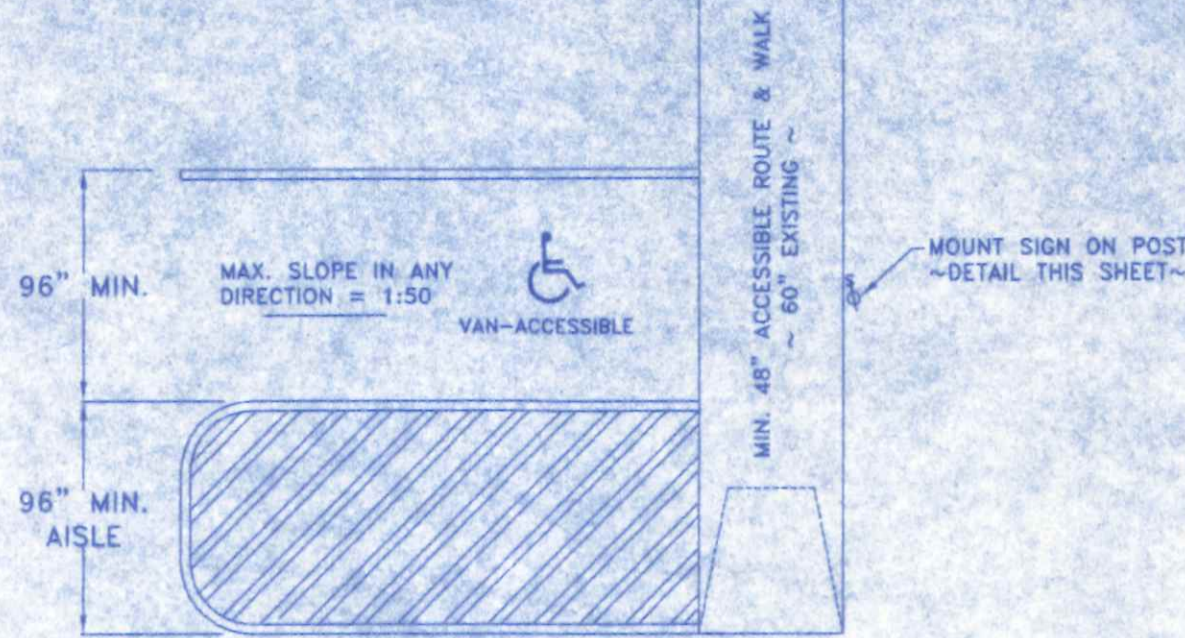
ACCESSIBILITY SYMBOL SIGN REQUIRED AT ALL SPACES MARKED THUS.



ADDITIONAL SIGN AT ALL REQUIRED VAN SPACES.

FINISHED GRADE OF ACCESSIBLE ROUTE

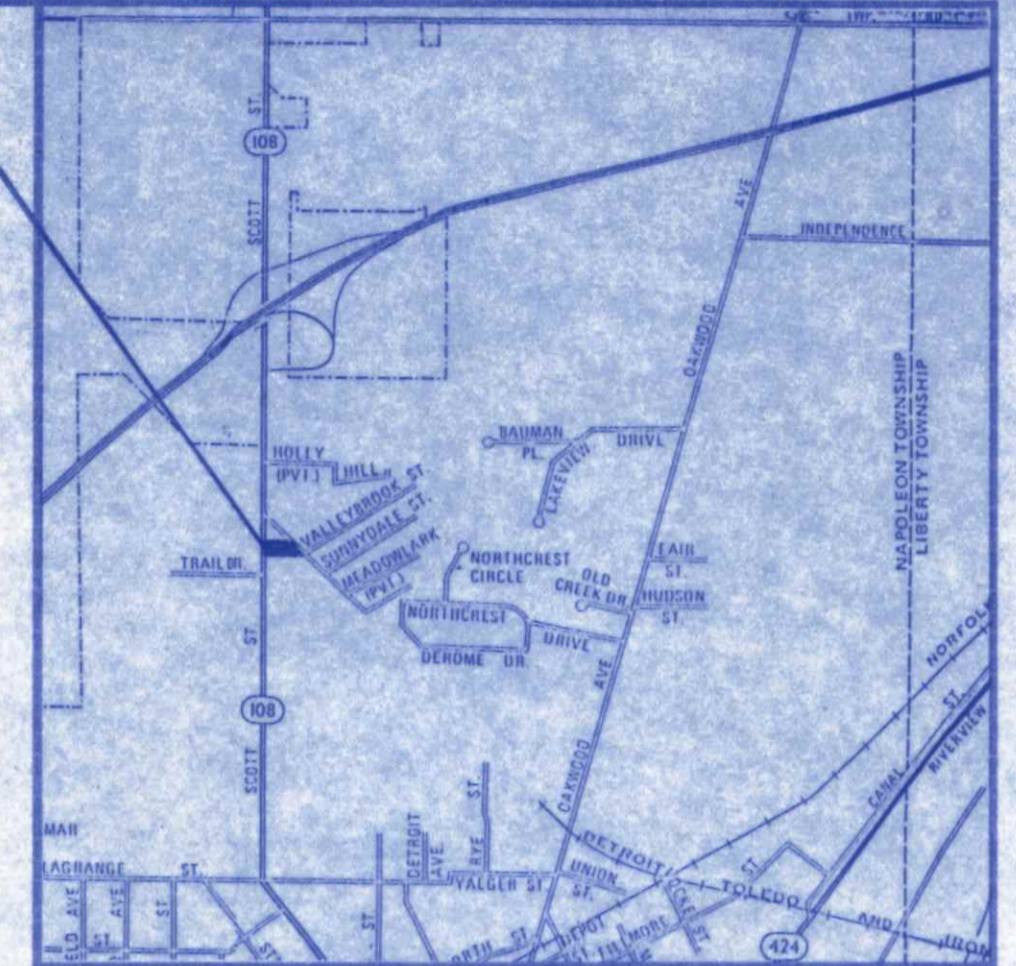
ACCESSIBLE PARKING SPACE SIGN  
MOUNTING HEIGHT & DETAIL  
NO SCALE



ACCESSIBLE PARKING SPACE DIMENSIONS  
NO SCALE

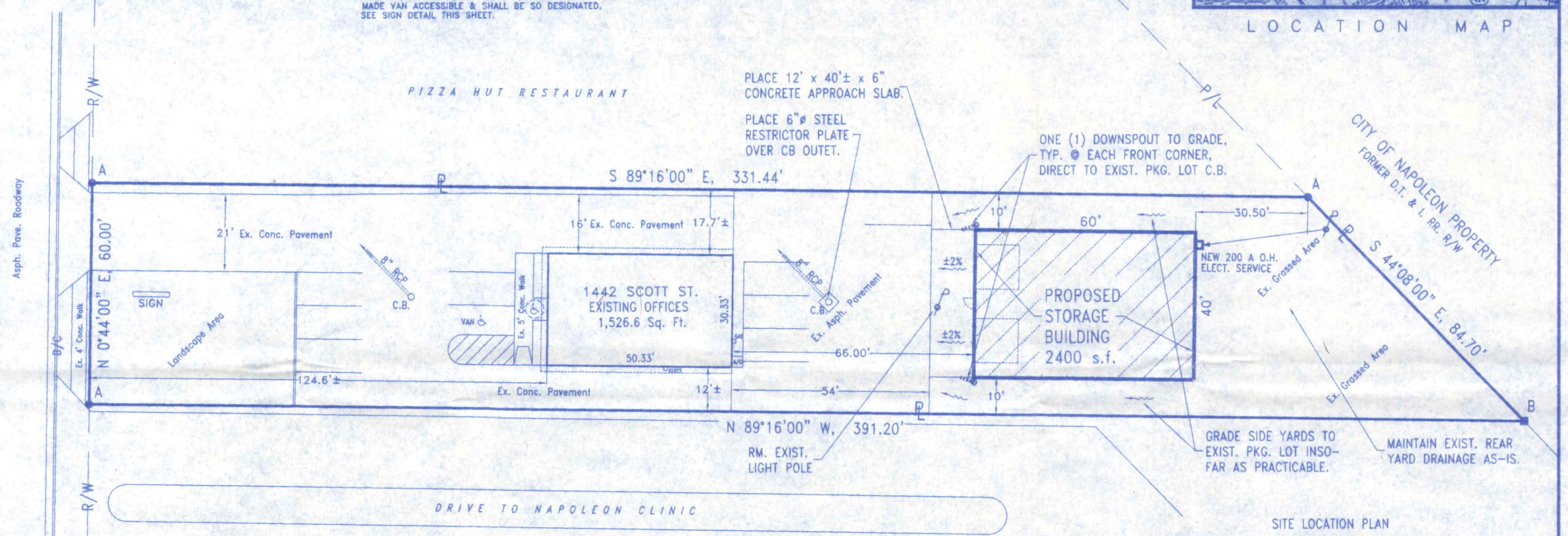
NOTE:  
VAN ACCESSIBLE SPACES REQUIRE A MIN. ACCESS AISLE WIDTH OF 96". ONE OF EVERY 8 HANDICAPPED SPACES (BUT NOT LESS THAN ONE) SPACE SHALL BE MADE VAN ACCESSIBLE & SHALL BE SO DESIGNATED. SEE SIGN DETAIL THIS SHEET.

PROJECT LOCATION



LOCATION MAP

SCOTT STREET ~ S.R. 108  
60' R/W, Assumed



SITE LOCATION PLAN  
FOR  
SAUL INSURANCE AGENCY

Being Lot Number 2 of the Luzny Addition to Napoleon, Ohio  
Section 12, Town 5 North, Range 6 East, Napoleon Township,  
Henry County, Ohio

LOT AREA = 0.498 ACRES (21,692.9 SQ. FT.)  
ZONING = C-4, PLANNED COMMERCIAL  
8 PARKING SPACES REQUIRED - TOTAL  
10 PARKING SPACES PROVIDED - TOTAL  
1 HANDICAPPED SPACE (VAN ACCESSIBLE)

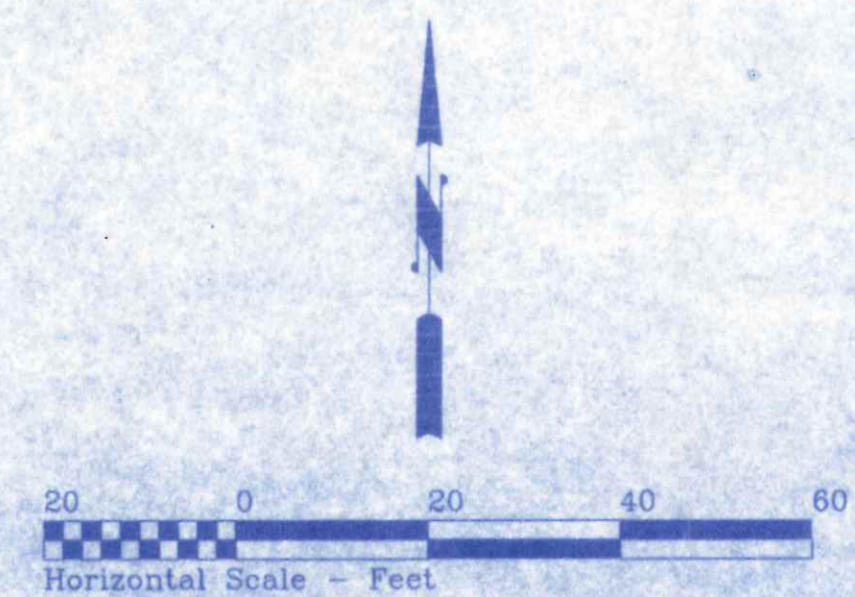


OHIO UTILITIES PROTECTION SERVICE  
The underground utilities shown hereon are only approximate. Some of the utilities were located by field observation, where possible, and the remaining utilities were derived from various records. Exact locations must be determined by the UTILITY COMPANIES. For exact locations, telephone the Ohio Utilities Protection Service (O.U.P.S.) toll free at 1-800-362-2764. (Telephone 2 working days before any digging.)

SURVEY LEGEND

A ● = IRON PIN  
B ■ = CONC. MON.

REFERENCE SURVEY BY R. L. GERMANN, PE. PS.

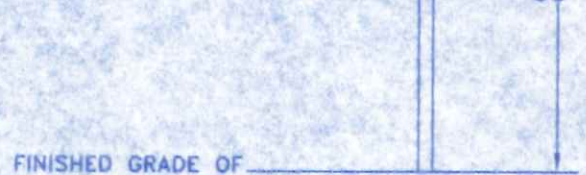


<b>SAUL INSURANCE AGENCY</b>	
1442 N. SCOTT STREET	419.599.2771
NAPOLEON, OHIO	
DIRECTORY: C:\ND\CUSTOM	FILE NAME: SAUL INSURANCE SITEPLAN
DRAWN BY: R.D.S. ~ dba: NEW DIMENSIONS	REVISED:
SITE PLAN & LOCATION PLAN	
BUSINESS/PERSONAL STORAGE BLDG.	
DATE: JUNE, 2006	SCALE: 1" = 20'
DRAWING NUMBER:	S - 1

MATTE OR NON-GLARE FINISH WITH LIGHT CHARACTERS ON DARK BACKGROUND OR DARK CHARACTERS ON LIGHT BACKGROUND.

ACCESSIBILITY SYMBOL SIGN REQUIRED AT ALL SPACES MARKED THUS.

ADDITIONAL SIGN AT ALL REQUIRED VAN SPACES.



FINISHED GRADE OF ACCESSIBLE ROUTE

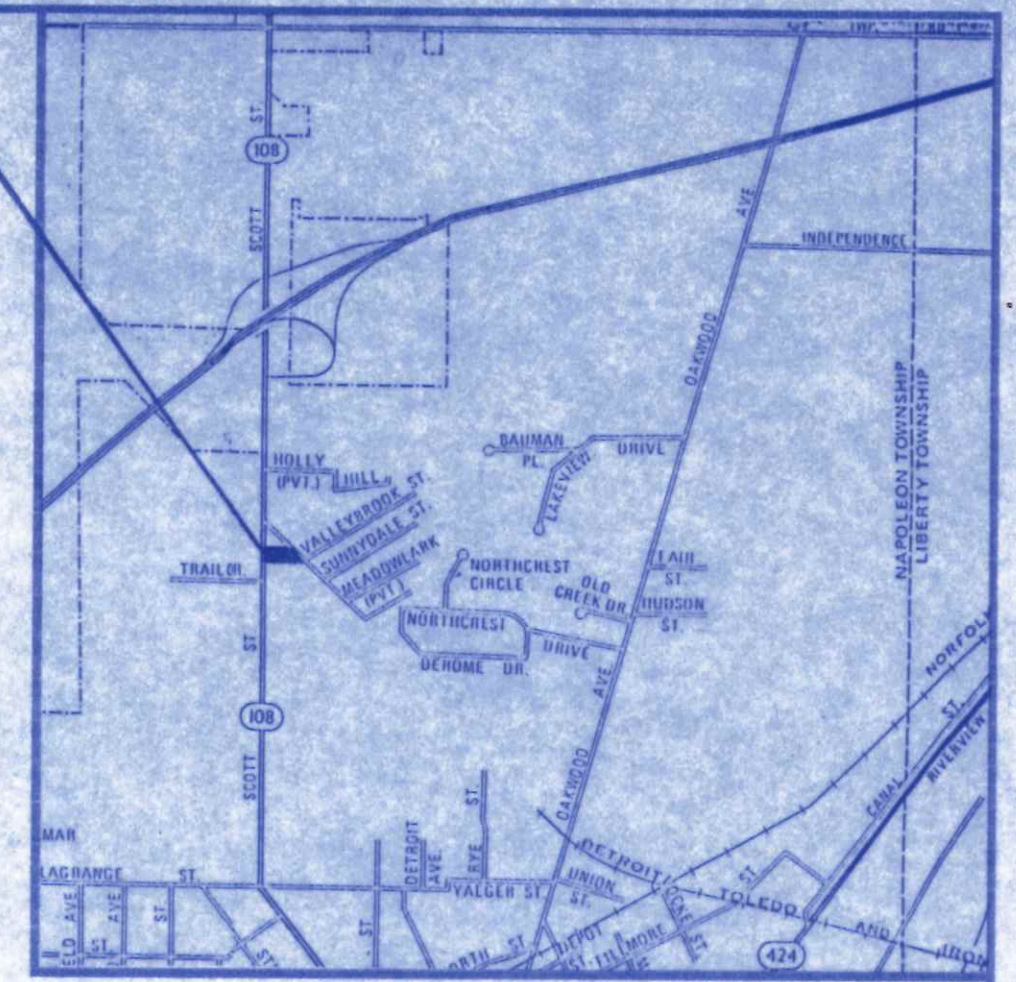
**ACCESSIBLE PARKING SPACE SIGN MOUNTING HEIGHT & DETAIL**  
NO SCALE



**ACCESSIBLE PARKING SPACE DIMENSIONS**  
NO SCALE

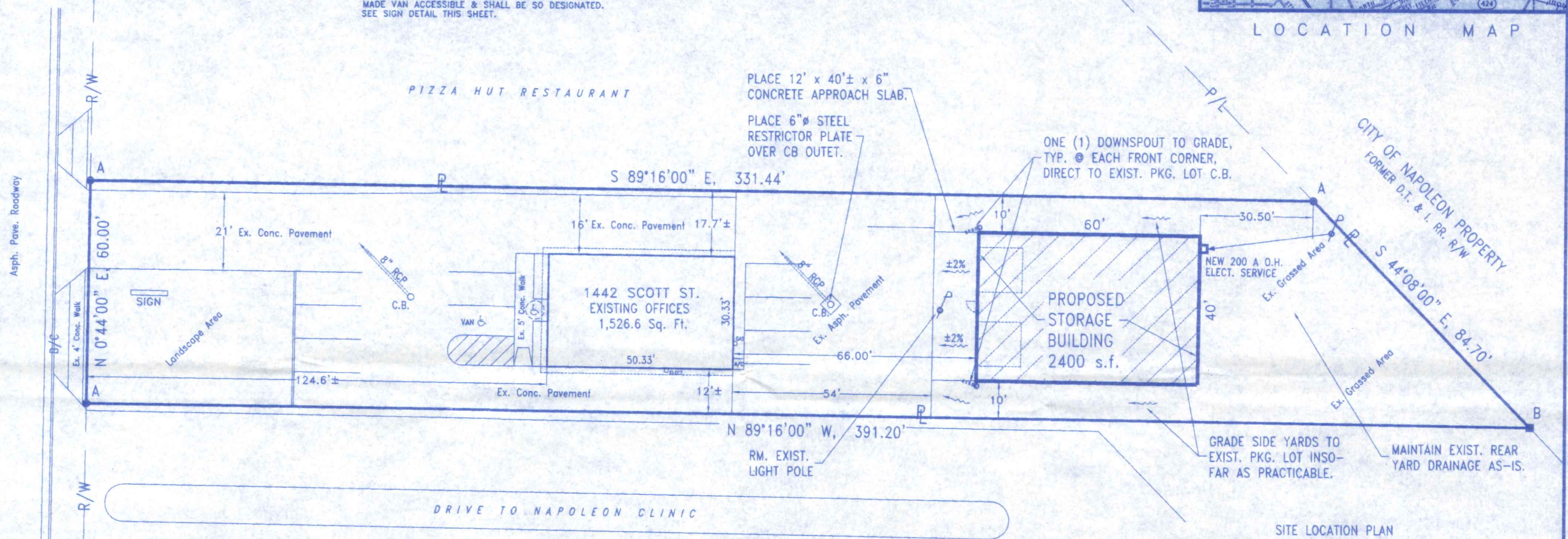
NOTE:  
VAN ACCESSIBLE SPACES REQUIRE A MIN. ACCESS AISLE WIDTH OF 96". ONE OF EVERY 8 HANDICAPPED SPACES (BUT NOT LESS THAN ONE) SPACE SHALL BE MADE VAN ACCESSIBLE & SHALL BE SO DESIGNATED. SEE SIGN DETAIL THIS SHEET.

PROJECT LOCATION



LOCATION MAP

SCOTT STREET ~ S.R. 108  
60' R/W, Assumed



SITE LOCATION PLAN FOR SAUL INSURANCE AGENCY

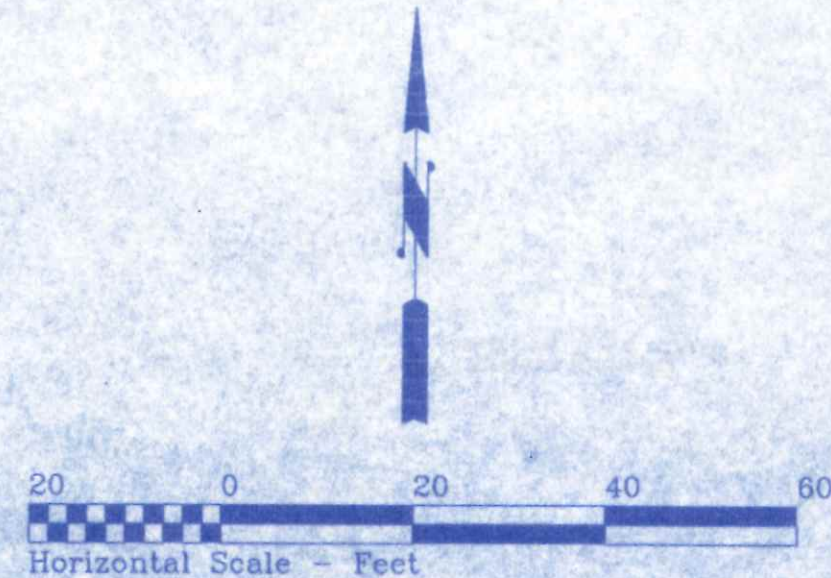
Being Lot Number 2 of the Luzny Addition to Napoleon, Ohio Section 12, Town 5 North, Range 6 East, Napoleon Township, Henry County, Ohio

- LOT AREA = 0.498 ACRES (21,692.9 SQ. FT.)
- ZONING = C-4, PLANNED COMMERCIAL
- 8 PARKING SPACES REQUIRED - TOTAL
- 10 PARKING SPACES PROVIDED - TOTAL
- 1 HANDICAPPED SPACE (VAN ACCESSIBLE)



OHIO UTILITIES PROTECTION SERVICE  
The underground utilities shown hereon are only approximate. Some of the utilities were located by field observation, where possible, and the remaining utilities were derived from various records. Exact locations must be determined by the UTILITY COMPANIES. For exact locations, telephone the Ohio Utilities Protection Service (O.U.P.S.) toll free at 1-800-362-2764. (Telephone 2 working days before any digging.)

**SURVEY LEGEND**  
A ● = IRON PIN  
B ■ = CONC. MON.  
REFERENCE SURVEY BY R. L. GERMAN, PE. PS.



<b>SAUL INSURANCE AGENCY</b>		
1442 N. SCOTT STREET	419.599.2771	NAPOLEON, OHIO
DIRECTORY: C:\ND\CUSTOM	FILE NAME: SAUL INSURANCE\SITEPLAN	REVISED:
DRAWN BY: R.D.S. ~ dba: NEW DIMENSIONS		SCALE: 1" = 20'
<b>SITE PLAN &amp; LOCATION PLAN</b>		DATE: JUNE, 2006
		DRAWING NUMBER: <b>S - 1</b>
<b>BUSINESS/PERSONAL STORAGE BLDG.</b>		